

Micro Differential Pressure Switch DPS52 Series

FOR WARDS, LABORATORIES, CLEAN WORKSHOPS AND SO ON

PRODUCT DATA AND INSTALLATION INSTRUCTIONS

APPLICATION

DPS52 is an adjustable differential pressure switch used in HVAC systems. It is compact and designed to detect small pressure changes. The switch allows for on-site adjustment of the set point using a black scale and adjustment knob, eliminating the need for a pressure gauge. It also features a transparent cover for protection and has IP54-level protection.

BENEFITS

- Feedback micro pressure changes, and the pressure difference can be adjusted
- Automatic reset function

TECHNICAL SPECIFICATIONS

Pressure range	20...200-5000Pa
Pressure media	Air, non flammable or non hazardous gases
Process connection	The inner and outer diameter of the plastic pipe can be selected.
Switching capacity	1.5A(0.4A) at 250VAC Resistive(inductive) 0.1A at 24VDC
Initial contact resistance	<100 milliohms
Electrical connections	6.35*0.8 AMP standard flat insert
Protection class	IP54 (with cover)
Mounting lugs	Integrated in bottom housing
Medium temperature	-20...+85 °C [-4...185 °F]
Ambient temperature	-40...+85 °C [-40...185 °F]
Membrane material	Silicone

CONTENTS OF DELIVERY

The deliver includes (in the case of individual packages)

The following part:

- 1 DPS52 Micro Differential Pressure Switch
- 1 Data sheet with installation information



- 1 Set of mounting accessories:
2m of silicone hosing
2 joining pipes with 4 screws

APPROVALS



OPERATING RANGES

Model	Pressure Difference Range	Return Difference	Tolerance
02	20...200	10±3	15%
03	30...300	10±3	15%
04	40...400	20±4	15%
05	50...500	20±4	15%
10	200...1000	100±15	15%
25	500...2500	150±15	15%
11	100...1000	50±5	15%
50	1000...5000	250±25	15%

(For other pressure ranges, please consult the factory)

Unit: Pa

1bar=100kPa=0.1MPa=14.5psi

DIMENSIONS IN mm[in]

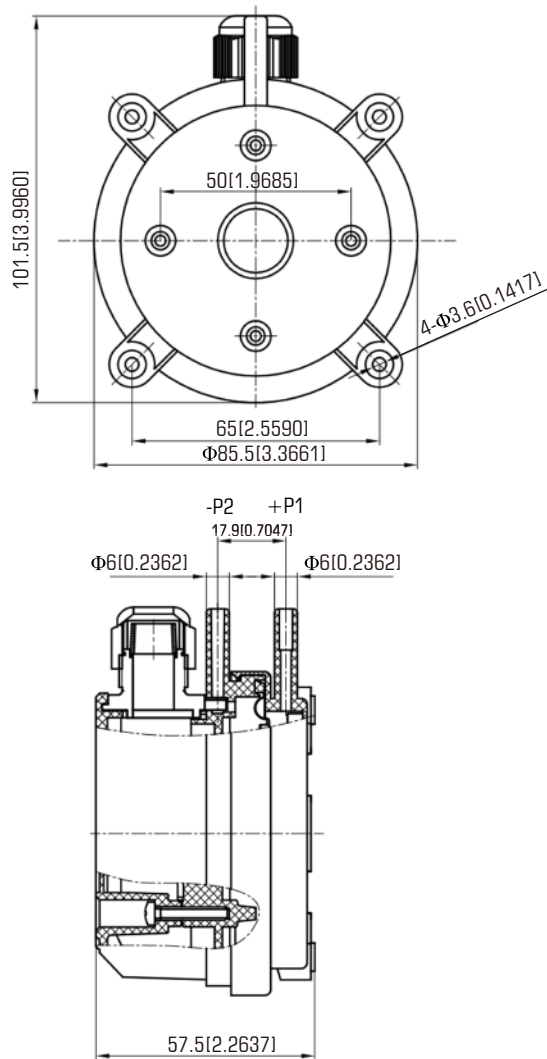


Fig.1. Dimensions of DPS52 Series pressure switches

P1 = higher pressure

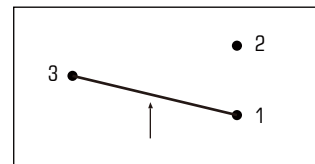
P2 = lower pressure

*Use two screws only, for mounting lugs!

OPTIONS / ACCESSORIES



Figure 1
2m of silicone hosing
2 joining pipes with 5 screws



1=NC 2=NO 3=COM

Figure 2
Arrangement of contacts



CAUTION

Switch off power before removing cover!

Anwoll

ANWOLL INDUSTRIES, INC

5634 Grand Floral Blvd. Houston,
TX 77041 USA