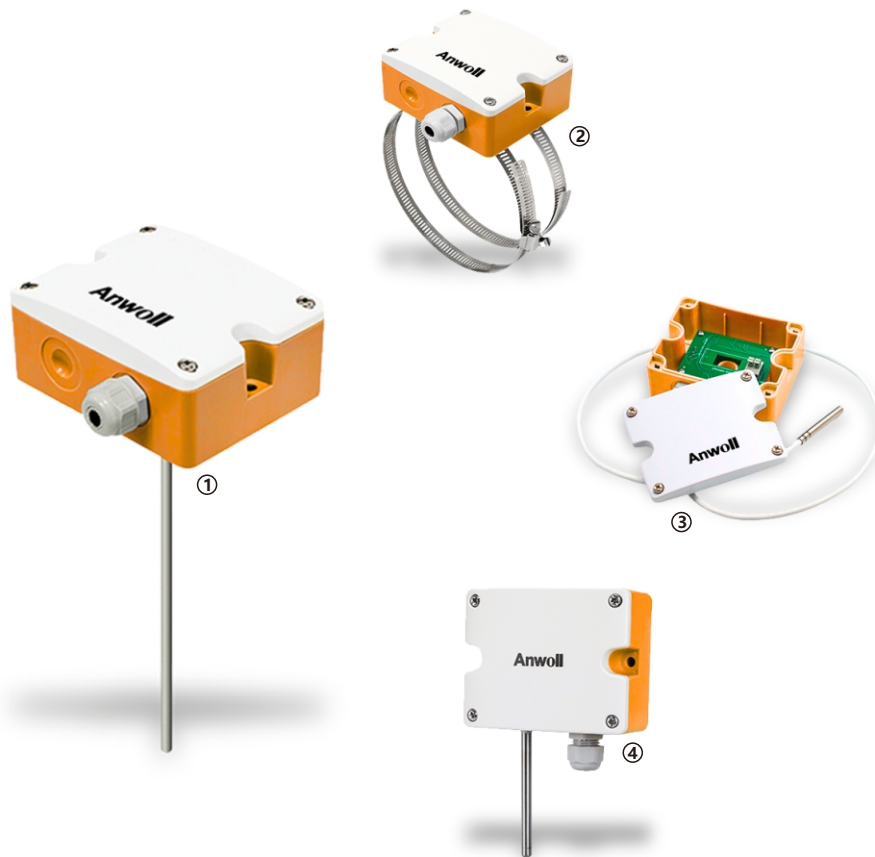


TEMPERATURE TRANSMITTER MODEL TT61



1)TT61 water pipe type 2)TT61 clamp type 3)TT61 split type 4)TT61 wall mounted type

The TT61 series temperature transmitter is a sensor specially designed for industrial applications . It is specially designed for lightning surge , electrostatic discharge , group pulse , pressure resistance, etc., and has strong anti-interference ability . There are five installation methods :wall mounted, air pipe/water pipe, split , and clamp . Three output modes of current , voltage, and thermal resistance are optional. Strong onsite trial installation capability . Spring screws and terminal posts are designed for quick installation. It can be widely used in computer

rooms , HVAC, buildings , storage and other places where temperature measurement and control are required.

Features

- Multiple signal output types, suitable for various processing equipment
- Five installation structures, suitable for various installation environments
- The protection level is Ip65

Technical parameter

General

Sensor	High-precision thermal resistance, see selection table (resistance output type)/PT1000, Class A (analog output type)
Accuracy	Typical 0.2...0.5°C@0/25°C, see order reference No.±0.3°C@25°C, see temperature accuracy curve for details

Operating conditions

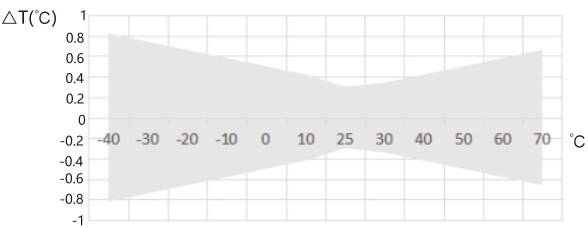
Housing material	PC housing, stainless steel probe (6mm) and casing
Temperature	-40...70°C, 0...95%RH(Non-condensing)
IP grade	IP65

Electrical overview

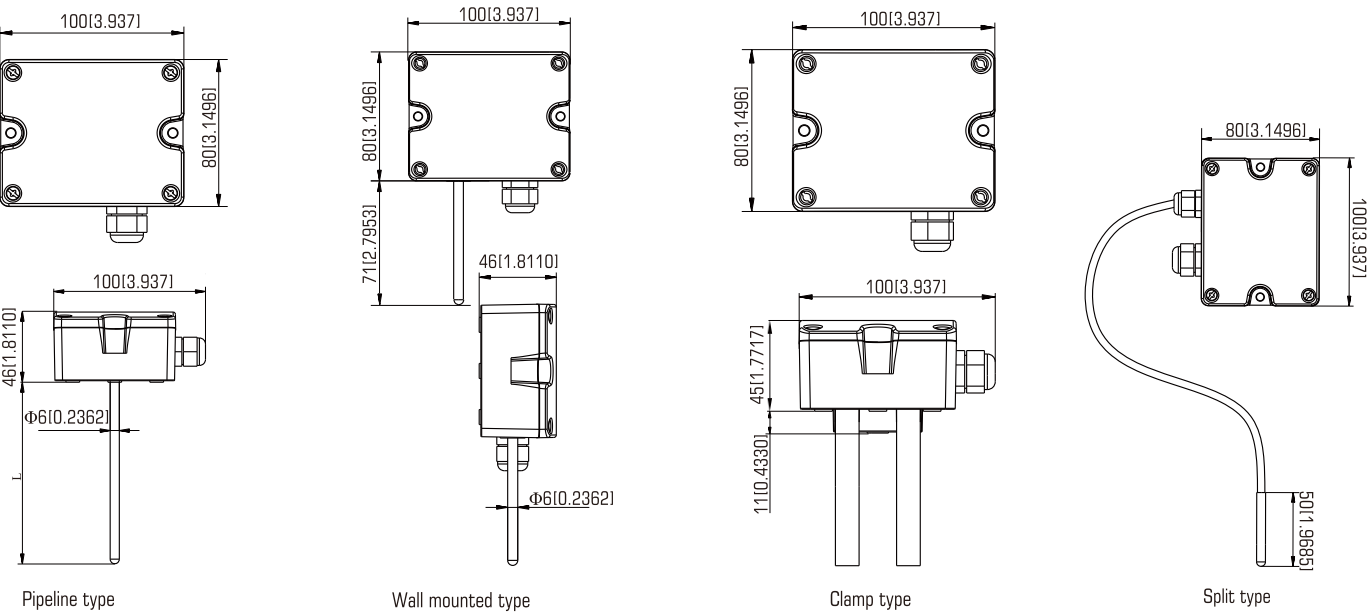
Output	Resistance value ,please refer to the selection table and thermal resistance indexing table 4...20 mA or 0...10 VDC, 0...5 VDC
--------	--

Thermal resistance	Please check the selection table and thermalresistance indexing table
Power supply	Voltage type 15...35 VDC/24 VAC±20% Current type 18.5...35 VDC (RL=500Ω) 8.5...35 VDC(RL=0Ω)
Output load	(Analog output type)≤500 Ω (Current type), ≥2 KΩ(0...5V), ≥3 KΩ(0...10V)

Temperature Accuracy Curve(Analog output model)



Dimensiones in mm(in)



Ordering information

Example part number: TT61-2111

Model TT61 series temperature transmitter, Installation type Duct Type, Output Pt1000, ±0.2°C@0°C, Temperature range 0...50°C, Probe length 100 MM.

TT61-2111

①	②	③	④	⑤
Name	Installation type	Output	Temperature range	Probe length(TT61-2/3)
TT61	1 Wall Mounted Temperature Transmitter 2 Duct Type Temperature Transmitter 3 Water Pipe Type Temperature Transmitter 4 Split Type Temperature Transmitter 5 Clamp Type Temperature Transmitter	V0 0...10VDC(three-wire),±0.3°C@25°C A4 4...20mA(two-wire),±0.3°C@25°C V5 0...5VDC(three-wire),±0.3°C@25°C 0 PT1000,±0.2°C@0°C 1 PT100,±0.2°C@0°C 2 NTC20K,±0.3°C@25°C 6 NTC10K,±0.3°C@25°C	0 Null 1 0...50°C 2 -20...60°C 8 Others (Customer specified)	0 65 MM 1 100 MM 2 200 MM 3 150 MM 8 Others (Customer specified)

Please make separate remarks for special requirements.